



WOMEN CREW NECK SWEATSHIRTS
STSW874- STELLA CROPSTER WAVE TERRY

The women's cropped crew neck sweatshirt wave terry

Medium Fit

- Set-in sleeve
- 1x1 rib at neck collar, sleeve hem and bottom hem
- Inside herringbone back tape
- Self fabric half moon at back neck
- Twin needle topstitch on all seams

Combo options



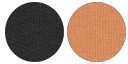
Globetrotter Wave Terry Decker Wave Terry

WHITES



NATURAL RAW

COLORS



BLACK

VOLCANO STONE

ESSENTIAL
HEATHERS



CREAM HEATHER
GREY

Shell : Seersucker Terry , 100% Cotton - Organic Ring Spun Combed , Panel washed , 350 GSM

Printing Specifications

For suitable print techniques, please download our printing guide

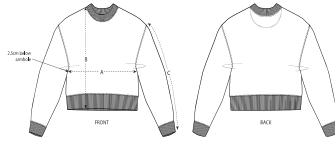
Certifications & memberships



Wash Instructions

Wash similar colours together, no ironing on print, wash and iron inside out.





SIZES	XS	S	M	L	XL	XXL
A Half Chest	47.5	50	53	56	59	62
B Body Length	49.5	51.5	53.5	55.5	56.5	57.5
C Sleeve Length	50	50	51	51.5	52	52

PACKING

SIZES	XS	S	M	L	XL	XXL
PCS/BAG	5	5	5	5	5	5
PCS/BOX	20	20	20	20	20	20