



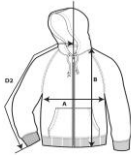
1568 NEW!

Adult Full Zip Hooded Sweatshirt

**COMFORT
COLORS®**
★ EST. 1975 ★
GARMENT DYE
RING SPUN
80% COTTON / 20% POLYESTER
MADE IN HONDURAS
L - G - G

DETAILS

Weight	322.0 G/SqM
Content	80% ring spun cotton, 20% Polyester
Yarn Count	31/1
Features	Soft-washed garment-dyed fabric Jersey lined hood with colour-matched flatcord Rolled forward shoulder Back patch Twill label Joker label Side-seamed Metal zipper Set in sleeves Pouch pockets 2x1 rib on cuffs and waistband Twin-needle neck, shoulder, armhole, cuffs and waistband
Sizes	S - 3XL
Case Packs	S - 3XL 12 PIECES
Colours	17
SKU's	102



SPECIFICATIONS

Centimeters	Tol-	Tol+	S	M	L	XL	2XL	3XL
Chest (A)	1.905	1.905	53.340	58.420	63.500	67.310	71.120	80.010
Length from HPS (B)	2.540	2.540	69.850	72.390	74.930	77.470	80.010	82.550
Inches	Tol-	Tol+	S	M	L	XL	2XL	3XL
Chest (A)	0.750	0.750	21.000	23.000	25.000	26.500	28.000	31.500
Length from HPS (B)	1.000	1.000	27.500	28.500	29.500	30.500	31.500	32.500

S-3XL

COLOURS	Code	Comments
Blue Jean	03P	
Blue Spruce	04P	
Brown	05D	
Chocolate	10P	
Crimson	12P	
Denim	14P	
Flo Blue	16P	
Graphite	07R	
Grey	19P	
Hemp	20P	
Ice Blue	21P	
Ivory	11D	
Pepper	34P	
Sage	18D	
Sandstone	37P	
True Navy	18R	
Willow	42P	

CHANGES

Additions

S, M, L, XL, 2XL, 3XL	Blue Jean, Blue Spruce, Brown, Chocolate, Crimson, Denim, Flo Blue, Graphite, Grey, Hemp, Ice Blue, Ivory, Pepper, Sage, Sandstone, True Navy, Willow
Total Net Change 102 SKU's	

PIGMENT DYE REFERS TO WASHED DOWN COLOURS THAT CONTINUE TO SOFTEN AND AGE WITH WASHING. PIGMENTS ARE INSOLUBLE COLOUR PARTICLES ATTACHED TO THE SURFACE OF CLOTH USING A BINDING AGENT. SLIGHT SHADE VARIATIONS ARE INHERENT IN THE PIGMENT DYE PROCESS.

DUE TO THE NATURE OF THE GARMENT DYEING PROCESS, PIGMENT DYED GOODS SHOULD ALWAYS BE WASHED SEPARATELY BEFORE WEARING TO AVOID BLEEDING ISSUES.